



## POWER MOSFETS

POWER MOSFETS		
SOT-23		
N-CHANNEL		
Part No.	VDSS	ID(A)
K2302	20	3.2
K2302S	20	2.5
K2306A	30	5
K3400	30	5.8
K5402	30	4
K5406	30	3.6
K3402	30	4.2
K2310A	60	3
K2328	100	1.5
K2328S	100	1.2
K2325	250	0.38
2N7002	60	0.115
2N7002E	60	0.115
BSS123	100	0.17
BSS138	50	0.2
P-CHANNEL		
Part No.	VDSS	ID(A)
K2301S	-20	-2
K2301	-20	-2.6
K2305	-20	-4.2
K5403	-30	-2.6
K2305A	-30	-3.2
K3401	-30	-4.2
K5409	-30	-2.6
K3403	-30	-3.7
K3407	-30	-4.1
K2329S	-100	-1.2
SOT-323		
N-CHANNEL		
Part No.	VDSS	ID(A)
KS7400	30	2.5
2N7002W	60	0.115
BSS138W	50	0.2
2N7002EW	60	0.115
SRK7002W	60	0.115
P-CHANNEL		
Part No.	VDSS	ID(A)
KS7401	-30	-2
BSS84W	-50	-0.13
TSOP-6		
N-CHANNEL		
Part No.	VDSS	ID(A)
KTT2604	30	5.5
KTT3434	30	6.1
DUAL N-CHANNEL		
Part No.	VDSS	ID(A)
KTT6800	30	3.4
KTT6802E	30	3.3
P-CHANNEL		
Part No.	VDSS	ID(A)
KTT2605	-30	-4

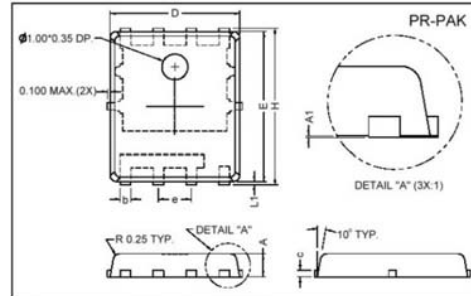
POWER MOSFETS		
TSOP-6		
DUAL P-CHANNEL		
Part No.	VDSS	ID(A)
KTT6801	-30	-2.3
KTT4443	-30	-2.3
COMPLEMENTARY N-P CHANNEL		
Part No.	VDSS	ID(A)
KTT3585	20	3.5
	-20	-2.5
KTT6601	30	3.4
	-30	-2.3
KTT6602	30	3.3
	-30	-2.3
SOT-89		
N-CHANNEL		
Part No.	VDSS	ID(A)
KM0410S	100	2.2
KM0410S	100	3.5
P-CHANNEL		
Part No.	VDSS	ID(A)
KM2305A	-30	-3.2
SOT-223		
N-CHANNEL		
Part No.	VDSS	ID(A)
KL9971	60	5
KL0410	100	3.5
KL0410S	100	3
KL0220	200	1.9
KL2625	250	0.9
P-CHANNEL		
Part No.	VDSS	ID(A)
KL9575	-60	-4
KL0411S	-100	-1.5
SOP-8		
N-CHANNEL		
Part No.	VDSS	ID(A)
KSC4404	30	8.5
KSC6618	30	7
KSC6680	30	11.5
KSC9914	40	7
KSC9475	60	6.9
KSC0410	100	3.8
DUAL N-CHANNEL		
Part No.	VDSS	ID(A)
KSS9946	30	5
KSS4228	30	6.8
KSS4224	30	10
KSS9904	40	2.5
KSS9971	60	5
TO-251		
N-CHANNEL		
Part No.	VDSS	ID(A)
KI05N10	100	5
KI03N65	650	3
KI04N65	650	4



**POWER MOSFETS**

POWER MOSFETS			
SOP-8			
COMPLEMENTARY N-P CHANNEL			
Part No.	VDSS	ID(A)	
KSS5509A	30	6.1	
	-30	-4.8	
KSS4501	30	7	
	-30	-5.3	
KSS4503	30	6.9	
	-30	-6.3	
KSS4504	40	7	
	-40	-6.5	
KSS4510	100	3	
	-100	-2.5	
KSS4511	100	2.5	
	-100	-2.5	
P-CHANNEL			
Part No.	VDSS	ID(A)	
KSC4403	-30	-6.1	
KSC9435	-30	-5.3	
KSC9435BDY	-30	-5.3	
KSC4435	-30	-8	
KSC9915	-60	-6.5	
KSC9575	-60	-4	
DUAL P-CHANNEL			
Part No.	VDSS	ID(A)	
KSS4801	-30	-5	
KSS4953	-30	-5	
KSS9905	-40	-6.5	
TO-252			
N-CHANNEL			
Part No.	VDSS	ID(A)	
KJ3055	30	15	
KJ408	30	18	
KJ95N03	30	96	
KJ9964	40	23	
KJ9971	60	25	
KJ9973	60	14	
KJ2504	100	5	
KJ2504S	100	5.4	
KJ15N10	100	15	
KJ25N10	100	25	
KJ50N10	100	50	
KJ2508	250	3.3	
KJ02N65	650	2	
KJ03N65	650	3	
KJ04N65	650	4	
P-CHANNEL			
Part No.	VDSS	ID(A)	
KJ9435	-30	-20	
KJ405	-30	-18	
KJ6679	-30	-75	
KJ9965	-40	-23	
KJ9575	-60	-15	
KJ2505S	-100	-5	
KJ12P10	-100	-12	
TO-263			
N-CHANNEL			
Part No.	VDSS	ID(A)	
KU50N10	100	54	

POWER MOSFETS			
PR-PAK			
N-CHANNEL			
Part No.	VDSS	ID(A)	
KPR6506N03	30	65	
KPR1084N03	30	108	
KPR12N10	100	12	
KPR22N10	100	22	
KPR45N10	100	45	
PR-PAK			
P-CHANNEL			
Part No.	VDSS	ID(A)	
KPR5P06	60	5	
SPR-PAK			
N-CHANNEL			
Part No.	VDSS	ID(A)	
KSPR7N10	100	7.5	
KSPR18N10	100	18	





## HV Power MOSFET

Part No	Type	VDSS	Current	RDS(ON) 50% ID ( $\Omega$ )Max.	RDS(ON) 50% ID ( $\Omega$ )Typ.	Package
		V	A			
KPM01N651D	N	650	1	11	9.35	TO-252
KPM02N651D	N	650	2	5.5	4.7	TO-252
KPM04N651D	N	650	3.5	3.5	3.2	TO-252
KPM01N601D	N	600	1	12	8.5	TO-252
KPM02N601D	N	600	2	4.4	4	TO-252
KPM03N601D	N	600	3	4	3.4	TO-252
KPM04N601D	N	600	4.5	2.5	2.4	TO-252
KPM04N602D	N	600	4	3	2.6	TO-252
KPM01N651D1	N	650	1	12	9.5	TO-251
KPM02N651D1	N	650	2	5	4.6	TO-251
KPM04N651D1	N	650	4	3.5	3	TO-251
KPM01N601D1	N	600	1	12	8.5	TO-251
KPM02N601D1	N	600	2	5	4	TO-251
KPM04N602D1	N	600	4	3	2.6	TO-251
KPM01N501D1	N	500	1.2	5.6	4.48	TO-251
KPM02N401D1	N	400	2.5	4	3.4	TO-251
KPM03N801PF	N	800	3	4.5	3.5	TO-220F
KPM06N801PF	N	800	6	1.65	1.5	TO-220F
KPM08N701PF	N	700	8	0.9	0.75	TO-220F
KPM01N651PF	N	650	1	12	9.5	TO-220F
KPM02N651PF	N	650	2	5.5	4.7	TO-220F
KPM03N651PF	N	650	3	4.5	3.8	TO-220F
KPM04N651PF	N	650	4	3.5	3	TO-220F
KPM04N652PF	N	650	4.5	2.8	2.4	TO-220F
KPM05N651PF	N	650	5.5	2.5	2.1	TO-220F
KPM06N651PF	N	650	6	1.5	1.28	TO-220F
KPM07N651PF	N	650	6.9	1.3	1.1	TO-220F
KPM07N652PF	N	650	7.4	1.2	1	TO-220F
KPM09N651PF	N	650	9		0.91	TO-220F
KPM10N651PF	N	650	10	0.9	0.77	TO-220F
KPM12N651PF	N	650	12	0.83	0.71	TO-220F
KPM14N651PF	N	650	14	0.65	0.55	TO-220F
KPM02N601PF	N	600	2	4.4	4	TO-220F
KPM03N601PF	N	600	3	4	3.4	TO-220F
KPM04N601PF	N	600	4.5	2.8	2.4	TO-220F
KPM04N602PF	N	600	4	3	2.6	TO-220F
KPM05N601PF	N	600	5.5	2	1.76	TO-220F
KPM06N601PF	N	600	6	1.1	1	TO-220F
KPM06N602PF	N	600	6	1.2	1	TO-220F
KPM07N601PF	N	600	6.9	1.1	0.9	TO-220F
KPM07N602PF	N	600	7.4	1	0.85	TO-220F
KPM10N601PF	N	600	10	0.75	0.6	TO-220F
KPM12N601PF	N	600	12	0.65	0.55	TO-220F
KPM14N600PF	N	600	14	0.55	0.5	TO-220F
KPM05N501PF	N	500	4.5	1.5	1.2	TO-220F
KPM08N501PF	N	500	8	0.85	0.72	TO-220F
KPM13N501PF	N	500	13	0.48	0.39	TO-220F
KPM15N501PF	N	500	15	0.4	0.34	TO-220F
KPM03N401PF	N	400	3.5	2.8	2.4	TO-220F
KPM04N401PF	N	400	4.5	2.2	1.9	TO-220F
KPM05N401PF	N	400	5.5	1	0.85	TO-220F
KPM10N401PF	N	400	10	0.55	0.49	TO-220F
KPM19N401PF	N	400	19	0.24	0.2	TO-220F